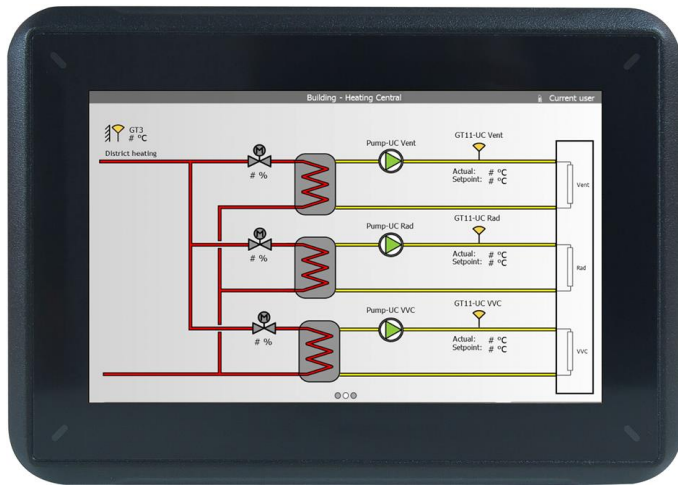


PP874M

Compact Product Suite hardware selector



The black panels are marine certified in 7" (PP874M) and 15.4" (PP885M, PP885H) sizes, with high resolution touch screen displays. Their classic black enclosure offers low light reflection and seamless integration for all on-board applications. Dimmable backlight to suit varied ambient light conditions, and high brightness for outdoor use in bright sunlight.

Features and benefits

- Easy to use**
 A fully deployable HMI with comprehensive and integrated templates and libraries for every conceivable process. The Panel Builder tool, with familiar Microsoft® Windows® environment along with multiple language support results in quick, easy and efficient engineering.
- State-of-the-arts graphics**
 Vector-based, high-resolution graphics in TFL/LED display, with icon-based interface, navigation and control.
- Robust and reliable**
 Panel 800 is constructed in a strong yet lightweight diecast, powder-coated aluminum housing. (IP65/IP20 for PP874M), (IP66/IP20, NEMA-4X for PP885M and PP885H) front casing withstands wet, dusty and demanding environments. Operating temperatures ranging between -15° C to +55° C with maximum 85% humidity.
- Truly open platform**
 Built on open architecture and technologies that accompany the .NET framework, these panels are capable of multi-brand controller connectivity. A multitude of connection options are available for local communication, expansion, remote access and more.
- Try your application before you use it**
 Nice possibility to simulate and run the application directly from the Panel Builder 800 before you use it.

General info	
Article number	3BSE069279R1
Category	Black
Display type	Touch
Display size	7"
Brightness	Standard brightness (500 cd/m ²)
Display resolution, ratio	800 x 480 (16:9)
Processor	ARM9 400MHz
Main memory	128 MB
External storage media	1 x SD card (or SDHC with latest image loaded)
Dimension WxHxD (mm)	204 x 143 x 52.2
Net weight (kg)	0.8
Power supply	24 VDC (18-32 VDC)
Operating temperature	-15 to +55 °C

Detailed data	
View angle (H/V)	140/120
Dimming	Maritime optimized to 0 cd/m ²
Interaction type	Resistive touch, 1 million finger touch operations
Realtime clock	Yes
Ethernet (shielded RJ 45)	1 x 10/100 Base-T
USB	1 x USB 2.0, max. 200 mA
Serial port	2 combined ports: 2 x RS232, 2 x RS422/485

Environmental and certification	
Frame material, front foil	Black powder-coated aluminum; polyester Autoflex EBA 180L
Power consumption	6.0 W
Protection (front/rear)	IP65 / IP20
Relative operating humidity	5-85% non-condensing
Storage temperature	-20 to +70 °C
Vibration and shock	0.7 G / 10 G
CE-marking	EN61000-6-4; EN61000-6-2
UL	UL/cUL 508
Marine	DNV Location classes: Temperature: B Humidity: B Vibration: A EMC: B Enclosure: Required protection according to DNV ABS, Product Design Assessment GL Environmental Category C, EMC 1 LR, ENV1 and ENV2, Compass Safe Distance 600 mm KR, Pt. 6, Ch. 2, Art. 301
RoHS compliance	EN 50581:2012
WEEE compliance	DIRECTIVE/2012/19/EU

Dimensions	
Dimension WxHxD (mm)	204 x 143 x 52.2
Cut-out dimension WxH (mm)	187 x 126
Mounting depth mm. (Including clearance)	43 (143)
Mounting	Panel Mount and VESA 75 x 75

www.abb.com/800xA
www.abb.com/controlsystems

800xA is a registered or pending trademark of ABB. All rights to other trademarks reside with their respective owners.

We reserve the right to make technical changes to the products or modify the contents of this document without prior notice. With regard to purchase orders, the agreed particulars shall prevail. ABB does not assume any responsibility for any errors or incomplete information in this document.

We reserve all rights to this document and the items and images it contains. The reproduction, disclosure to third parties or the use of the content of this document – including parts thereof – are prohibited without ABB's prior written permission.

Copyright© 2018 ABB All rights reserved